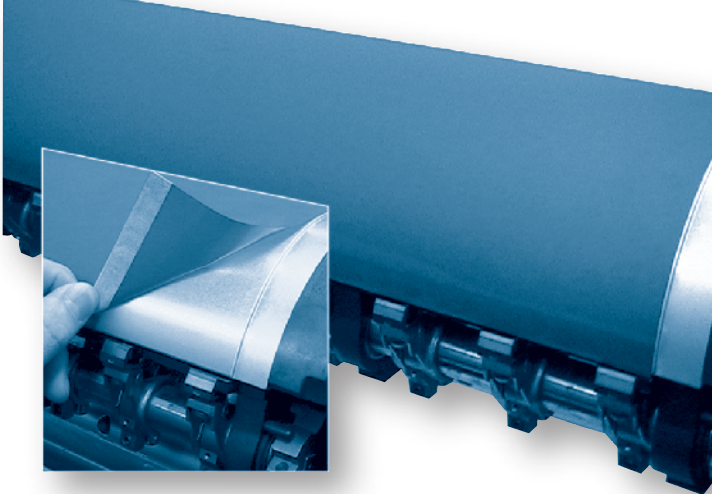


BLUE GLASS®

anti-marking films

Installation and Care



Printing Research Inc. supplies **BLUE GLASS®** anti-marking film/paper in jumbo rolls, generic cut sheet sizes, “custom” cut sheet sizes and converted jackets in non-adhesive or adhesive backed forms. These are available in three different surface grades; micro, small and large bead, in blue or white versions.

Please read these entire instructions before using or installing the **BLUE GLASS®** anti-marking film/papers.

TRIMMING AND SIZING JUMBO ROLLS AND GENERIC CUT SHEETS

Measure the **BLUE GLASS®** anti-marking film/paper so that it is at least as big as the maximum printed sheet or the extents of the cylinder surface. **Do not use** an industrial paper guillotine to cut the **BLUE GLASS®** film as the pressure gate may damage the film surface and will dull the cutting blade. We suggest using a hand rotary cutter or razor knife.

PRI can custom cut sheets to an exact size at no additional charge for individual sheets. An entire jumbo roll can be cut to a specified size or several sizes for an additional per sheet cutting charge. Contact Printing Research Inc. for details.

INSTALLATION – ADHESIVE BACKED SHEETS/ROLLS

Once the sheet has been cut to the proper size, be sure to clean the cylinder surface of any foreign substances such as ink, spray powder, grease or solvents. Be sure the cylinder is dry before installation. Roll the **BLUE GLASS®** film with the tack paper facing outwards, fold the tack paper back approximately 2” (50 mm) and apply the adhesive side to the gripper edge of the cylinder being sure it is straight and even. Applying pressure from the center out towards either side, firmly press the adhesive surface onto the cylinder surface. Continue this process until the entire sheet is applied to the cylinder surface.

INSTALLATION – NON-ADHESIVE BACKED SHEETS/ROLLS

Non-adhesive sheets can be applied in several manners; using existing clamping mechanisms, spray adhesives, double sided tapes, foam tapes, etc. Printing Research Inc. recommends a Teflon™ adhesive strip designed specifically to leave little or no residue when removed or replaced. This strip can be added at the time of purchase to custom size sheets at no additional charge or can be purchased in rolls for an additional charge. The Teflon adhesive strips can be supplied in 1/2”, 1” and 2” widths. Contact Printing Research Inc. for additional information.

Once the sheet has been cut to the proper size, apply a Teflon™ adhesive strip at the lead and tail edges on the back side (smooth side) of the **BLUE GLASS®** film. Be sure to clean the cylinder surface of any foreign substances such as ink, spray powder, grease or solvents. Be sure the cylinder is dry before installation.

Roll the **BLUE GLASS®** film with the adhesive strips facing outwards, remove the tack paper completely from the adhesive strip. Apply the adhesive strip to the gripper edge of the cylinder being sure it is straight and even. Applying pressure from the center out towards either side, firmly press the adhesive strip onto the cylinder surface.

Holding the tail edge of the sheet, rotate the press until the tail is accessible, remove the tack paper back completely from the adhesive strip. Applying pressure from the center out towards either side, firmly press the adhesive strip onto the cylinder surface. The sheet should be mounted so there is no movement (looseness) gripper to tail.

INSTALLATION – CONVERTED JACKETS

(HEIDELBERG)

If you have purchased **BLUE GLASS**® film in a converted jacket form it is ready to be installed upon removing it from the shipping container. The **BLUE GLASS**® film is shipped with all the necessary hardware for the installation process. It is also pre-packed for your press model. In some cases it may be necessary to add additional packing or remove the packing already supplied (see below). This is determined by your application and operating conditions. Contact Printing Research Inc. for further details.

To install your converted jacket(s) please review the installation procedures for Super Blue 2® anti-marking, anti-static systems, or the chrome jackets provided by the manufacturer of your press model. There may be some variances in the installation procedures, for details please contact Printing Research Inc.

PACKING REQUIREMENTS

In some cases it may be necessary to pack the **BLUE GLASS**® film to satisfactorily perform for your press model and application. Printing Research Inc. recommends a clearance between the impression (back) cylinder and the transfer surface of 0.5 mm +/- 0.2 mm (.012” +/- .005”) plus the thickest sheet the press is capable of printing. Example: If the press is able to print on a stock thickness of 0.37 mm (.014”) the clearance between the **BLUE GLASS**® surface and the impression (back) cylinder should be 0.87 mm (.034”). For more detailed information please contact Printing Research Inc.

BLUE GLASS® ANTI-MARKING FILM THICKNESS

Surface Grade	Non-Adhesive	Adhesive Backed
Micro Bead	0.15 mm (+/- 0.02 mm) (.006” +/- .001”)	0.30 mm (+/- 0.02 mm) (0.11” +/- .001”)
Small Bead	0.16 mm (+/- 0.2 mm) (.007” +/- .001”)	0.31 mm (+/- 0.02 mm) (.012” +/- .001”)
Large Bead	0.26 mm (+/- 0.02 mm) (.010” +/- .001”)	0.40 mm (+/- 0.02 mm) (0.16” +/- .001”)
Paper	0.26 mm (+/- 0.02 mm) (.010” +/- .001”)	Not Available

CARE & MAINTENANCE

BLUE GLASS® anti-marking film is an extremely durable product and requires cleaning only when marking issues begin to occur.

Enclosed with your purchase is a sample pack of Dupont™ Sontara® textured cloth wipes. There are two sides to this cleaning/wiping product, a scrubbing side and a polishing side. We suggest using a keytone solvent such as a water miscible blanket/roller wash to help remove any ink build up. Apply the solvent to the **scrubbing** side of the wipe and gently wash the surface of the **BLUE GLASS**® film to remove any ink residues.

While the smooth side of this wipe is great for many polishing/cleaning applications, **do not use the smooth side** of the wipe to clean the surface as the beaded surface may pull unwanted lint particles. A fresh wipe may be required to completely polish and dry the surface.

If you should have any additional questions or comments please feel free to contact our customer service department.

www.superblue.net • info@superblue.net

USA (800) 627-5537 or (214)353-9000

Fax: (214) 357-5847

Printing Research Inc., 10954 Shady Trail

Dallas, TX, USA 75220

Blue Glass and Super Blue 2 are registered trademarks of Printing Research, Inc. Other product names used in this document are trademarks of their respective companies. Copyright © 2005, Rev. 2006, Printing Research, Inc. All Rights Reserved.